

海水鱼类单殖吸虫研究 XI 鳞盘虫属二新种 *

张剑英 刘 琳 丁雪娟 陈智兵

(华南师范大学生物系 广州 510631)

摘要: 从福建、海南、广东与广西所设的 22 个采样点采获鳞盘虫属 *Diplectanum* 标本中, 又有 2 种为新种。波茎鳞盘虫, 新种 *Diplectanum undulicirrosum* sp. nov 与叉片鳞盘虫, 新种, *Diplectanum furcelamellosum* sp. nov., 它们均以具特殊之交接器结构而区别于本属的其它虫种。

关键词: 单殖吸虫, 鳞盘科, 鳞盘虫属, 新种

中图分类号: Q959.153.1 **文献标识码:** A **文章编号:** 1000-3207(2000)02-0150-05

文中量度以微米计, 测量方法依 Oliver (1968)。新种模式标本由华南师范大学生物系及作者保存。

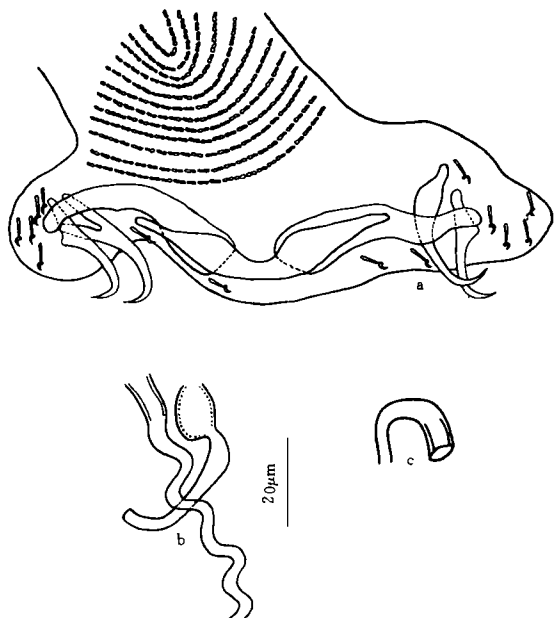


图1 Fig.1 波茎鳞盘虫, 新种 *Diplectanum undulicirrosum* sp. nov.

a. 后吸器 (Haptor elements); b. 交接器 (Copulatory organ);
c. 阴道 (Vagina)

1 波茎鳞盘虫, 新种 *Diplectanum undulicirrosum* sp. nov. (图 1)

寄主: 四带牙鲷 [*Pelates quadrilineatus* (Bloch)]; 鲷 [*Therapon theraps* Curier]

采集地及时间: 广东湛江 (21° 2' N, 110° 3' E), 1993 年 4 月 30 日; 广西企沙 (21° 7' N, 108° 3' E), 1995 年 9 月 18 日。

正模标本编号: GDzj93043001; 副模标本编号: GXqs95091801-9

虫体中等大小, 体长 536 (477 - 625.4), 体宽 87.4 (74.2 - 100.7)。咽近圆形, 大小为 28.1 (23.7 - 31.6) × 28.9。具眼点两对。

后吸器与前体部区分明显, 大小为 83.9 (68.4-105.2) × 1150.7 (118.4

收稿日期: 1997-12-03; 修订日期: 1999-08-26

基金项目: *国家自然科学基金资助项目。No.39270100, 39570089

作者简介: 张剑英 (1935—), 男, 汉族, 福建惠安人。教授, 主要从事鱼类寄生虫学的研究

- 194.6)。背腹面各具一鳞盘。鳞盘由9-12列几丁质小片向心排列构成, 大小为 $45.2(39.4 - 60.5) \times 51.5(39.4 - 73.6)$ 。边缘小钩7对, 长10.5。具2对中央大钩及3根联结片。腹中央大钩内外突分化明显, 其量度为, a: $39.9(35.5 - 42.1)$, b: $38.5(32.9 - 42.1)$, c: $35.8(34.2 - 36.8)$, d: $8.5(5.3 - 13.2)$, g: $16.8(13.2 - 18.4)$, f: $17.5(15.8 - 21)$ 。背中央大钩内外突分化不明显, 其量度为, a: $35.7(31.6 - 36.8)$, b: $35.4(31.6 - 36.8)$, c: $19.5(13.2 - 22.4)$ 。联结片包括1根中央联结片及1对侧联结片。中央联结片弧形, 上缘中部下凹, 凹处外侧扩伸, 末端尖细, 大小为 $14.5(13.2 - 18.4) \times 78.8(68.4 - 92)$ 。侧联结片内侧端比外侧端粗壮, 外侧末端略向下弯。大小为 $17.1(15.8 - 18.4) \times 57.2(47.3 - 65.8)$ 。

支持器简单呈弧状, 有一较宽大的基部, 大小为 $9.9(7.9 - 10.5) \times 6.4(5.3 - 7.9)$; 支持器据弯度长为 $41.4(36.8 - 46.0)$ 。交接管为一弯曲的几丁质管, 基部稍宽, 在向前伸延时管径变窄, 呈波状弯曲。管长据弯度为 $72.5(43.4 - 94.7)$, 管径1.3 - 2.6。阴道为弧管状, 一端略膨大, 据弯度长为 $31.0(26.3 - 36.8)$ 。卵未见。

以上描述依据10个封片标本。

讨论: 鳞盘虫属之交接管一般为锥管状, 在其前端或管之某部分可有膨大或分支, 或弯成弧形, 或在量度上有变化。而本种之交接管则经几度弯曲, 而呈波状。支持器在本属中少见, 而本种则具有一弧状的支持器。故与本属已报告的近70个虫种不同, 认为应是一新种。

2 叉片鳞盘虫, 新种 *Diplectanum furcelamellosum* sp. nov. (图2)

寄主: 银牙鲷 [*Otolithes argenteus* (Curier et Valenciennes)]

采集地及时间: 广东汕头 ($22^{\circ}42'N$, $114^{\circ}31'E$), 1993年10月21日; 广西企沙 1995年9月5日; 9月2日; 广东闸坡 ($21^{\circ}34'N$, $111^{\circ}49'E$), 1996年11月26日

正模标本编号: GDot93102101;

副模标本编号: GDot93102102-03; GXqs95090501-11; GDyj96112601-06

虫体中等大小, 体长 $674.7(455.8 - 890.4)$, 体宽 $173.4(116.6 - 222.6)$ 。咽圆柱状, 长 $59.8(44.7 - 89.4)$, 宽 $53.2(36.8 - 78.9)$ 。具眼点两对。

后吸器与前体部区分明显, 大小为 $54.3(39.4 - 71.0) \times 112.8(84.2 - 147.3)$ 。背腹鳞盘由4-6列同心圆排列的几丁质小杆构成, 大小为 $13.0(10.5 - 18.4) \times 14.5(10.5 - 21.0)$ 。边缘小钩7对, 胚型, 长为 $9.0(7.9 - 10.5)$, 它可着生于指状突的末端。具2对中央大钩及3根联结片。腹中央大钩内外突分化明显, 其量度为, a: $41.3(36.8 - 47.3)$, b: $39.0(31.6 - 44.7)$, c: $19.4(15.8 - 21.0)$, d: $21.3(15.8 - 23.7)$, g: $4.3(3.9 - 5.3)$, f: $20.2(17.1 - 23.7)$ 。背中央大钩内外突分化不明显, 其量度为, a: $37.4(32.9 - 42.1)$, b: $36.4(31.6 - 40.8)$, c: $21.8(18.4 - 36.3)$ 。联结片包括1根中央联结片及1对侧联结片。中央联结片近似菱形, 中央部上下缘略内凹, 向两侧逐渐膨大, 至两侧渐变尖细。其大小为 $8.5(7.9 - 10.5) \times 41.7(31.6 - 55.2)$ 。侧联结片似球拍状, 但内侧端扩展似板块, 外侧端约1/3处紧缩呈短柄状, 顶部稍膨大, 略有弯曲, 其大小为 $10.1(7.9 - 13.2) \times 24.6(19.7 - 31.6)$ 。

支持器较复杂, 由一叉形的几丁质小片和数块形状不太规则的片状体组成。支持器

大小为 $25.4(22.4 - 27.3) \times 18.5(16.6 - 21.4)$; 叉形小片大小为 $6.6(5.9 - 6.8) \times 1.9(1.8 - 2.0)$ 。交接管为弧形管, 紧靠叉形小片, 长为 $6.9(6.3 - 7.8)$, 直径约 1。未见阴道。卵长椭圆形, 一端具极丝, 大小为 $80.6(62.5 - 90) \times 50.6(40 - 57.5)$, 极丝长 $66.4(36.8 - 82.9)$ 。

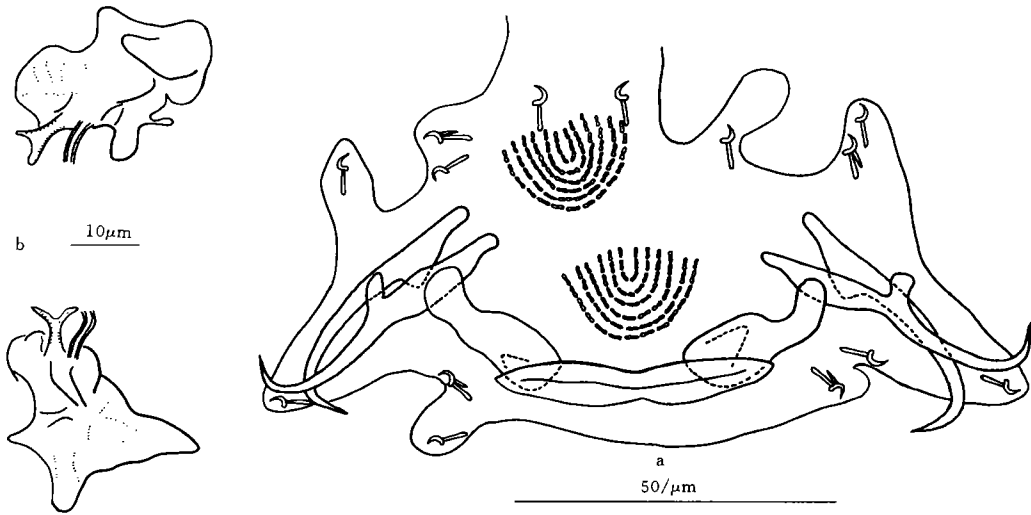


图2 Fig.2叉片鳞盘虫, 新种*Diplectanum furcelamellosum* sp. nov.
a. 后吸器 (Haptoral elements); b. 交接器 (Copulatory organ)

以上描述依据 20 个封片标本。

讨论: 由于本种具有细弱而短的交接管, 其长度不足 10; 支持器由一叉形的几丁质小片和形状各不相同的几丁质小片构成片状体, 这与本属已报告的虫种不同, 故认为应是一新种。

参 考 文 献

- [1] Yamaguti S. Monogenetic trematodes of hawaiian of fishes[J]. *Honolulu. Univ. of Hawaii Press.* 1968, 114—123
- [2] Tripathi Y R. Studies on the parasites of Indian fishes II. Monogenea, Family: Dactylogyridae[J]. *Ind. J. Helminthol.* 1957, 7(1):5—24
- [3] Young P C. Some monogenoideans of the family Diplectanidae Bychowsky, 1957 from australian teleost fishes[J]. *J. Helminthol.* 1969, 43(1/2):223—254
- [4] Oliver G. Recherches sur les Diplectanidae (Monogenea) parasites de Teleosteens du golfe du Lion [J]. I. Diplectaninae Monticelli, 1903. *Vie et Milieu.* 1968, 19(1-A):95—138
- [5] Oliver G. Les Diplectanidae Bychowsky, 1957 (Monogenea, Monopisthocotylea), parasites des Sciaenidae (Pisces, Perciformes) du golfe de Gascogne[J]. *Bull. Mus. Hist. natn. Paris.* 1980, 4 ser. 2:669—689
- [6] Oliver G. & Paperna I. Diplectanidae Bychowsky, 1957 (Monogenea, Monopisthocotylea), parasites de Perciformes de Meditranee orientale, de la mer Rouge et l'ocean Indien[J]. *Bull. Mus. Natn. Paris.* 1984, 4 ser., 6:49—65
- [7] Unnithan R V. Four new species Polyonchoineans (Monogenoidea) Parasites on gills of marine fishes from

- the Indian Seas [J] *J. Parasitol.* 1964, **50**(2): 241—247
- [8] Nagibina L. F. New species of the genus *Diplectanum* (Monogenoidea, Diplectanidae) Trudy Biologo-Pochvennogo Instituta. 1976, **35**(138): 89—91 (in Russian)
- [9] 张剑英、刘琳、丁雪娟. 海水鱼类单殖吸虫研究IV. 寄生于东海鱼类石首鱼类鳞盘虫二新种的记述[A]. 中国动物学会寄生虫专业学会成立十周年纪念论文集. 北京: 中国科学技术出版社, 1995: 83—87

MONOGENEA OF CHINESE MARINE FISHES XI. TWO NEW SPECIES OF THE GENUS *DIPLECTANUM* DIESING, 1858 *

ZHANG Jian-ying, LIU Lin, DING Xue-juan and CHEN Zhi-bing

(Department of Biology, South China Normal University, Guangzhou, 510631)

Abstract: All measurement are presented in micrometres, the measurement adopted for hamuli refers to that of Oliver (1968). All the type specimens are deposited in the Department of Biology, South China Normal University and in the author's collection.

1. *Diplectanum undulicirrosus* sp. nov, (Fig.1)

Host: *Pelates quadrilineatus* (Bloch) *Therapon theraps* Curier

Location: Gills

Locality: Zhanjiang (21°2' N, 110°3' E) Guangdong Province; Qisha (21°7' N, 108°3' E), Guangxi Zhuang Autonomous Region

Description:

Worms of medium size, body width 87.4(74.2—100.7), length 536(477—625.4). Haptor 83.9(68.4—105.2) × 150.7(118.4—194.6) in size. Pharynx suboval, 28.1(23.7—31.6) × 28.9 in size.

Squamodiscs are composed of 9—12 concentric rows of rodlets. Marginal hooklets 10.5 in length. Ventral hamuli with developed outer and inner root, with the dimension: length a, 39.9(35.5—42.1); length b, 38.5(32.9—42.1); length c, 35.8(34.2—36.8); length d, 8.5(5.3—13.2); length g, 16.8(13.2—18.4); length f, 17.5(15.8—21). Dimensions of dorsal hamuli: length a, 35.7(31.6—36.8); length b, 35.4(31.6—36.8); length c, 19.5(13.2—22.4). Median connective plate is arc-like, 14.5(13.2—18.4) × 78.8(68.4—92.0) in size. Transverse connective plate 17.1(15.8—18.4) × 57.2(47.3—65.8) in size.

Copulatory tube snake-like, length of tube according to it curvature, 72.5(43.4—94.7). The supporting apparatus curved in shape, 41.4(36.8—46.0). Vaginal tube 31.0(26.3—36.8) in total length. Egg has not been discovered after examination.

Description is based on 10 specimens.

Remarks: The new species is distinguished from the other species of the genus by its

characteristic structure of the male genitalia.

2. *Diplectanum furcelamellosum* sp. nov (Fig.2)

Host: *Otolithes argenteus* (Curier et Valenciennes)

Location: Gills

Locality: Aotou(22° 42' N, 114° 31' E), Zhapo (21° 34' N, 111° 49' E) Guangdong Province; Qisha Guangxi Zhuang Autonomous Region

Description:

Worms of medium size, body width 173.4(116.6 – 222.6), length 674.7(455.8 – 890.4). Haptor 54.3(39.4 – 71.0) × 112.8(84.2 – 147.3) in size. Pharynx suboval, 59.8(44.7 – 89.4) × 53.2(36.8 – 78.9) in size.

Squamodiscs are composed of 4—6 concentric rows of roblets. Marginal hooklets 9.0(7.9 – 10.5) in length. Ventral hamuli with developed outer and inner root, with the dimension: length a, 41.3(36.8 – 47.3); length b, 39.0(31.6 – 44.7); length c, 19.4(15.8 – 21.0); length d 21.3(15.8 – 23.7); length g, 4.3(3.9 – 5.3); length f, 20.2(17.1 – 23.7). Dimensions of dorsal hamuli: length a, 37.4(32.9 – 42.1); length b, 36.4(31.6 – 40.8); length c, 21.8(18.4 – 36.3). Median connective plate is rhombus-like, 8.5(7.9 – 10.5) × 41.7(31.6 – 55.2) in size. Transverse connective plate 10.1(7.9 – 13.2) × 24.6(19.7 – 31.6) in size.

The supporting apparatus complex, 25.4(22.4 – 27.3) × 18.5(16.6 – 21.4) in size, including a small fork-like cuticular piece and several large cuticular plates. Copulatory tube short and slender, close to the small fork-like piece, 6.9(6.3 – 7.8) in length. Vagina has not been discovered after examination. Eggs ellipse, 80.6(62.5 – 90) × 50.6(40 – 57.5) in size, with a filament, 66.4(36.8 – 82.9) in length.

Description is based on 20 specimens.

Remarks: The new species is distinguished from the other species of the genus by its characteristic structure of the male genitalia.

Key words: Monogenea; Diplectanidae; *Diplectanum*; New Species